

CABINET SELECTION



L I V I N G

KITCHEN & BATH

EUROPEAN FULL OVERLAY FRAMELESS CABINET LINE

Cabinet Code Information

Zen Living Manufactures a large selection of various types of functional cabinets, matching or exceeding typical custom cabinet manufacturers in North America. Due to the large selection of styles, sizes and colours, Zen's ERP software system uses codes derived from the full descriptions of each cabinet to allow accurate processing and manufacturing, ensuring accurate and on time supply to our clients.

Cabinet Construction Options

CARCASS CONSTRUCTION:	Frameless			
CARCASS ASSEMBLY:	Confirmat/Dowel		Dowel/Glue	
CARCASS THICKNESS:	5/8"	3/4"		
CARCASS BACK THICKNESS:	1/4"	5/8"	3/4"	
BASE CARCASS SHELF DEPTH:	Half	Full		
CARCASS DRAWER BOX:	Roller	Melamine	Double Wall	Dovetail
TOE KICK TYPE:	Integral Kick		Plastic Adjustable Kick	No Kick
GLIDES & HINGE	BOKE	DTC	Hettich	

Examples of the Order of the Code

CODE	WIDTH	HEIGHT	DEPTH	FINISHED	INTERIOR	END	GLASS
BSFH	30	34.5	24	F	I	L/R	G

Code Acronym

FINISHED INTERIOR	FI
FINISHED END LEFT	FL
FINISHED END RIGHT	FR

FINISHED END LEFT/RIGHT	FLR
GLASS DOOR	G

TABLE OF CONTENTS

Base Cabinets

Base Cabinet Specifications.....	1
Base Cabinet Images & Codes	1-8

Wall Cabinets

Wall Cabinet Specifications.....	9
Wall Cabinet Images & Codes.....	9-12

Finished Interior Cabinets

Finished Cabinet Specifications.....	13
Finished Interior Cabinet Images & Codes.....	13-15

Bathroom Cabinets

Bathroom Cabinet Specifications.....	16
Bathroom Cabinet Images & Codes.....	16-20

Wardrobes

Wardrobe Cabinet Specifications.....	21
Wardrobe Cabinet Images & Codes.....	21-24

Finish Panel

Finish Panel Specifications.....	25
Finish Panel Images & Codes.....	25-28

Index	29-30
--------------------	-------

BASE CABINETS

Specifications

One Shelf for Base Cabinets 1"-41"

Three Shelves for Base Cabinets Height From 42"-53"

Four Shelves for Base Cabinets Height From 54"-71"

Five Shelves for Base Cabinets Height From 72"-96"

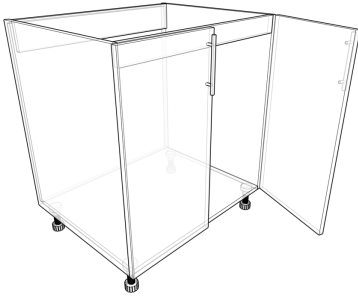
Base Rollout Drawers have a face Plate Matching Drawer

Client Needs To Specify Height of Appliance Opening

All cabinets 0"- 23 7/8" have one door.

All cabinets 24"- 48" have 2 doors.

Base Sink Full Height



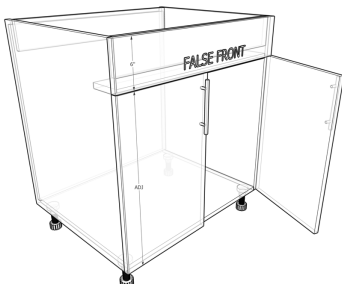
CODE: **BSFH** - W - H - D

Base Sink Slide In Full Height



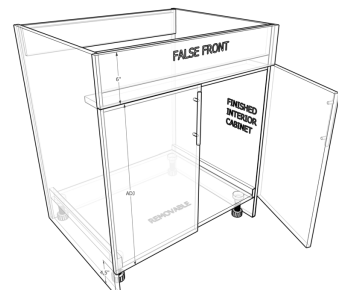
CODE: **BSSIFH** - W - H - D

Base Sink



CODE: **BS** - W - H - D

Base ADA Removable Sink



CODE: **BARS** - W - H - D

Base Sink 1 Drawer Bottom



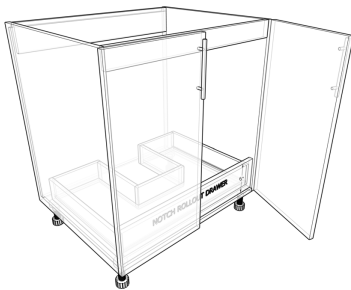
CODE: **BS1DB** - W - H - D

Base Sink 1 Drawer



CODE: **BS1D** - W - H - D

Base Sink 1 RollOut Full Height



CODE: **BS1RFH** - W - H - D

Base Sink 1 RollOut



CODE: **BS1R** - W - H - D

Base ADA Removable 1 Drawer Top



CODE: **BAR1DT** - W - H - D

Base ADA Removable Sink Full Height



CODE: **BARSFH** - W - H - D

Base Cooktop Full Height



CODE: **BCTFH** - W - H - D

Base Cooktop



CODE: **BCT** - W - H - D

Base Cooktop Slide In Full Height



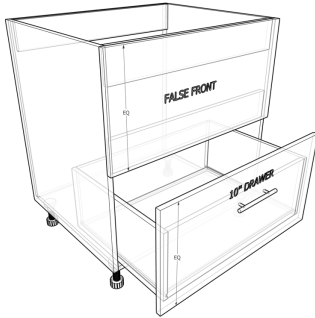
CODE: **BCTSIFH** - - -

Base Cooktop 1 Drawer Bottom



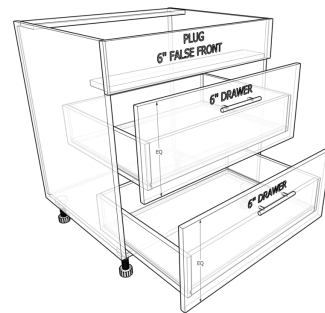
CODE: **BCT1DB** - - -

Base Cooktop 1 Drawer



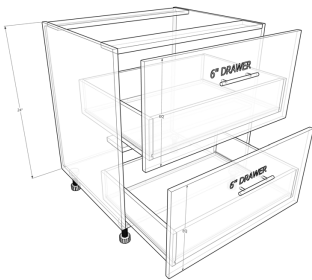
CODE: **BCT1D** - - -

Base Cooktop 2 Drawer



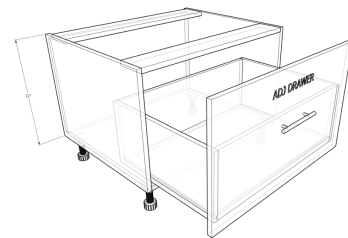
CODE: **BCT2D** - - -

Base Cooktop Slide In 2 Drawer



CODE: **BCTSI2D** - - -

Base Drawer Box



CODE: **BDB** - - -

Base Full Height



CODE: **BFH** - - -

Base 1 Drawer Top



CODE: **B1DT** - - -

Base 1 Drawer Bottom



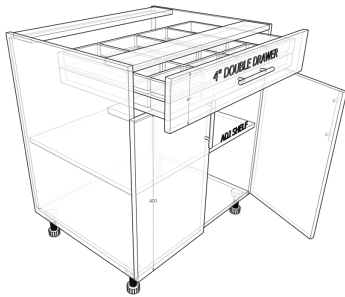
CODE: **B1DB** - W - H - D

Base 1 Cutting Board Top



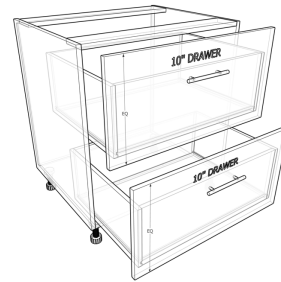
CODE: **B1CBT** - W - H - D

Base 1 Cutlery Double Drawer Top



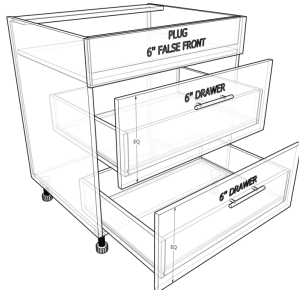
CODE: **B1CDDT** - W - H - D

Base Pot Pan 2 Drawer



CODE: **BPP2D** - W - H - D

Base Plug 2 Drawer



CODE: **BPL2D** - W - H - D

Base 3 Drawer



CODE: **B3D** - W - H - D

Base 4 Split Drawer



CODE: **B4SD** - W - H - D

Base 2 Split Drawer



CODE: **B2SD** - W - H - D

Base 4 Drawer



CODE: **B4D** - W - H - D

Base 5 Split Drawer



CODE: **B5SD** - W - H - D

Base 1 Rollout Full Height



CODE: **B1RFH** - W - H - D

Base 2 Rollout Full Height



CODE: **B2RFH** - W - H - D

Base 1 Drawer Top 2 Rollout



CODE: **B1DT2R** - W - H - D

Base 3 Rollout Full Height



CODE: **B3RFH** - W - H - D

Base Attach 2 Rollout Drawer



CODE: **BA2RD** - W - H - D

Base Pantry Full Height



CODE: **BPFH** - W - H - D

Base Blind Corner Left/Right



CODE: **BBCL/BBCR** - - -

Base Pantry 4 Drawer



CODE: **BP4D** - - -

Base Pantry 3 Rollout Full Height



CODE: **BP3RFH** - - -

Base Corner Corner



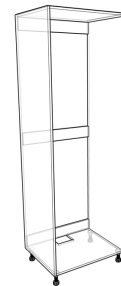
CODE: **BCC** - - -

Base Angle Corner



CODE: **BAC** - - -

Base Tall Frameless Fridge



CODE: **BTFF** - - -

Base Tall Corner Corner



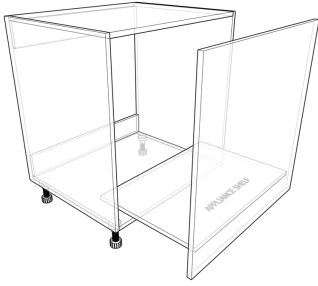
CODE: **BTCC** - - -

Base Tall



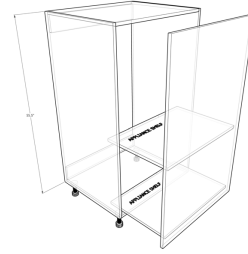
CODE: **BT** - - -

Base Face Frame Single Appliance



CODE: **BFFSA** - W - H - D

Base Face Frame Double Appliance



CODE: **BFFDA** - W - H - D

Base Tall Full Height



CODE: **BTFH** - W - H - D

Base Tall Accessory Full Height



CODE: **BTAFH** - W - H - D

Base Pantry Tall



CODE: **BPT** - W - H - D

Base 3 Drawer Tall



CODE: **B3DT** - W - H - D

Base Pantry 4 Drawer Tall



CODE: **BP4DT** - W - H - D

Base Tall 3 Drawer Frameless Single Appliance



CODE: **BT3DFS** - W - H - D

Base Tall 1 Drawer Frameless Double Appliance



CODE: **BT1DFDA** - W - H - D

WALL CABINETS

Specifications

No Shelves for Wall Cabinets Height From 1”-17”

One Shelf for Wall Cabinets Height From 18”-29”

Two Shelves for Wall Cabinets Height From 30”-41”

Three Shelves for Wall Cabinets Height From 42”-53”

Four Shelves for Wall Cabinets Height From 54”-71”

Five Shelves for Wall Cabinets Height From 72”-96”

All cabinets 0”- 23 7/8” have one door.

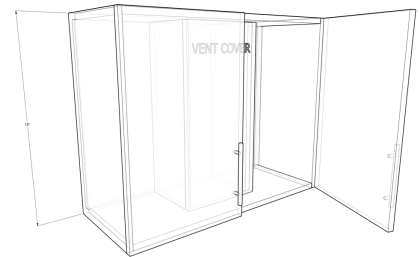
All cabinets 24”- 48” have 2 doors.

Wall



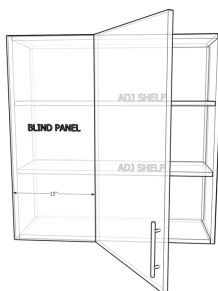
CODE: W - - -

Wall Hidden Valance



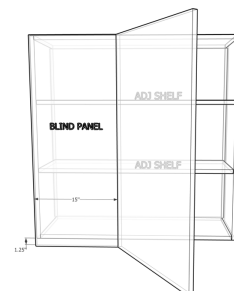
CODE: WHV - - -

Wall Blind Corner Left/Right



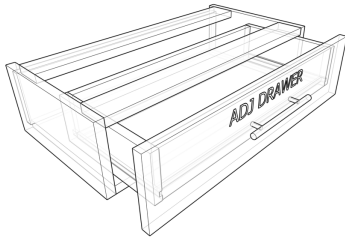
CODE: WBCL/WBCR - - -

Wall Hidden Valance Blind Corner Left/Right



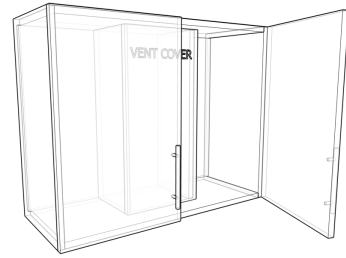
CODE: WHVBCL/WHVBCR - - -

Wall Drawer Box



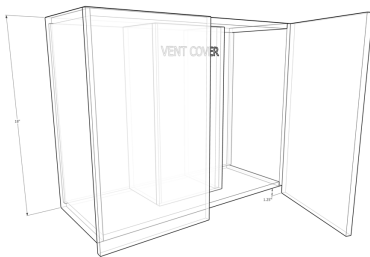
CODE: **DB** - W - H - D

Wall Hood Fan



CODE: **WHF** - W - H - D

Wall Hidden Valance A Hood Fan



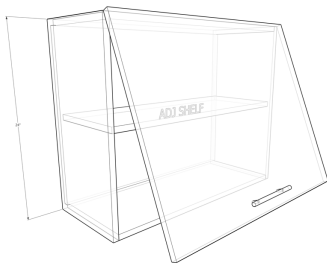
CODE: **WHVAHF** - W - H - D

Wall Hood Fan Flip Up



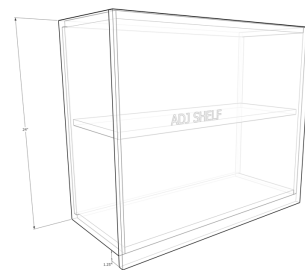
CODE: **WHFFU** - W - H - D

Wall Flip Up



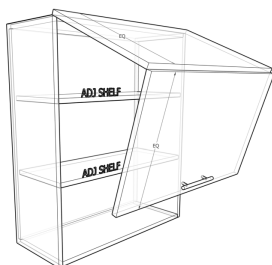
CODE: **WFU** - W - H - D

Wall Hidden Valance Flip Up



CODE: **WHVFU** - W - H - D

Wall Bi Fold



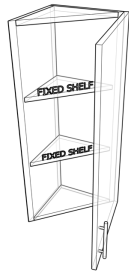
CODE: **WBF** - W - H - D

Wall Hidden Valance Bi Fold



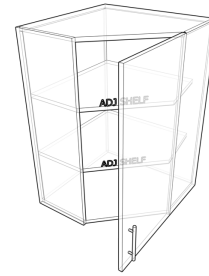
CODE: **WHVBF** - W - H - D

Wall Angle End Full Height



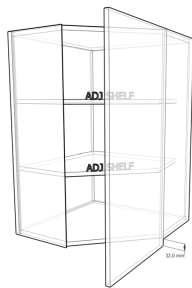
CODE: **WAEFH** - - -

Wall Angle Corner



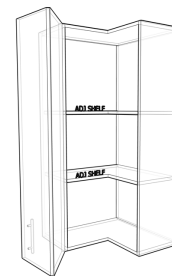
CODE: **WAC** - - -

Wall Hidden Valance Angle Corner



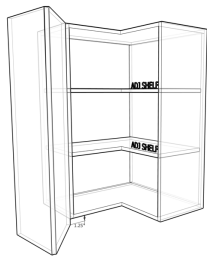
CODE: **WHVAC** - - -

Wall Corner Corner



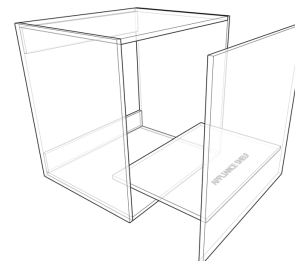
CODE: **WCC** - - -

Wall Hidden Valance Corner Corner



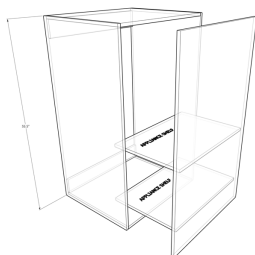
CODE: **WHVCC** - - -

Wall Face Frame Single Appliance



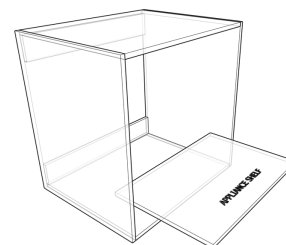
CODE: **WFFSA** - - -

Wall Face Frame Double Appliance



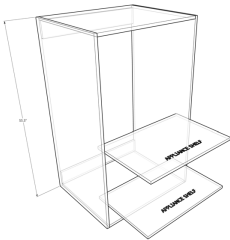
CODE: **WFFDA** - - -

Wall Frameless Single Appliance



CODE: **WFSA** - - -

Wall Frameless Double Appliance



CODE: **WFDA** - ^W - ^H - ^D

FINISHED INTERIOR CABINETS

Specifications

Cabinets only come with Finished Interiors

Mirror Medicine Cabinet comes with 33mm Mirror

All cabinets 0" - 23 7/8" have one door.

All cabinets 24" - 48" have 2 doors.

Wall Open



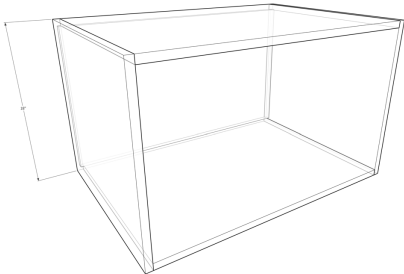
CODE: **WO** - - -

Base Open



CODE: **BO** - - -

Island Microwave Open



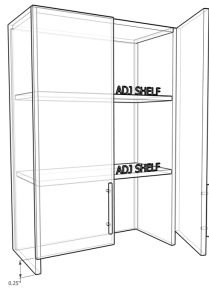
CODE: **IMWO** - - -

Base End Open Left/Right



CODE: **BEOL/BEOR** - - -

Hutch Full Height



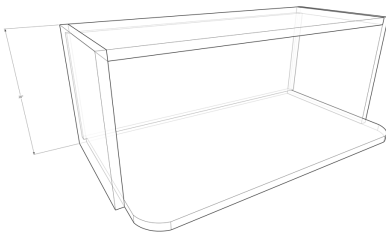
CODE: **HFH** - W - H - D

Wall Angle End Open



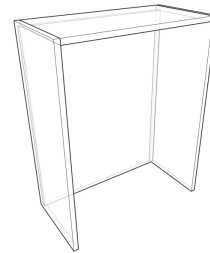
CODE: **WAE0** - W - H - D

Wall Microwave



CODE: **WMW** - W - H - D

Hutch Accessory



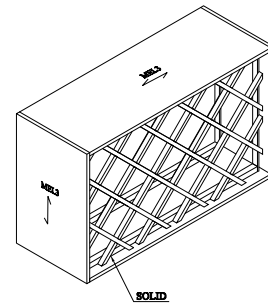
CODE: **HA** - W - H - D

Hutch ADJ Shelf



CODE: **HAS** - W - H - D

Wine Lattice Rack



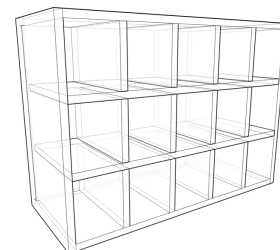
CODE: **WLR** - W - H - D

Vertical Pigeon Hole



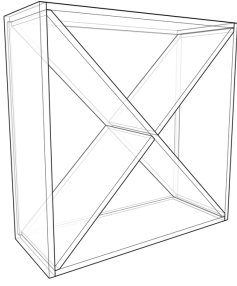
CODE: **VPH** - W - H - D

Horizontal Pigeon Hole



CODE: **HPH** - W - H - D

Wine X Cubie



CODE: **WXC** - ^W - ^H - ^D

BATHROOM CABINET

Specifications

One Shelf for Vanity Cabinets

All cabinets 0" - 23 7/8" have one door.

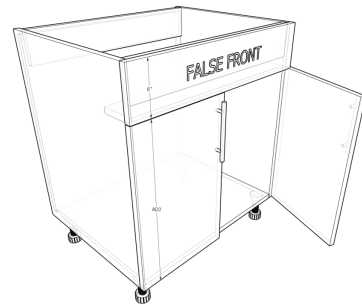
All cabinets 24" - 48" have 2 doors.

Vanity Sink Full Height



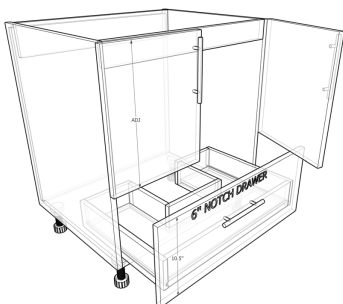
CODE: **VSFH** - W - H - D

Vanity Sink



CODE: **VS** - W - H - D

Vanity Sink 1 Drawer Bottom



CODE: **VS1DB** - W - H - D

Vanity Sink 1 Drawer



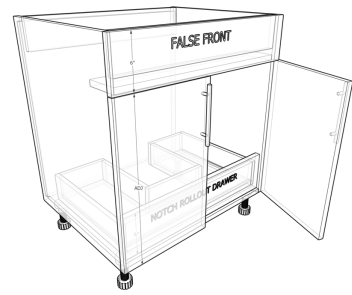
CODE: **VS1D** - W - H - D

Vanity Sink 1 Roll Out Full Height



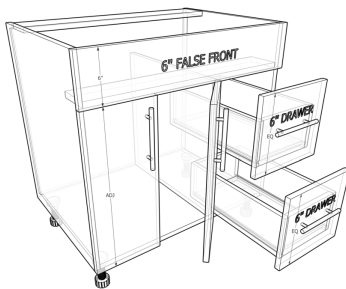
CODE: **VS1RFH** - W - H - D

Vanity Sink 1 Roll Out



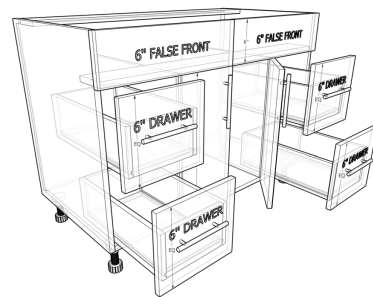
CODE: **VS1R** - W - H - D

Vanity Combo 2 Drawer Left/Right



CODE: **VC2DL/VC2DR** - W - H - D

Vanity Combo 4 Drawer



CODE: **VC4D** - W - H - D

Vanity Full Height



CODE: **VFH** - W - H - D

Vanity 1 Drawer Top



CODE: **V1DT** - W - H - D

Vanity 1 Drawer Bottom



CODE: **V1DB** - W - H - D

Vanity 2 Drawer



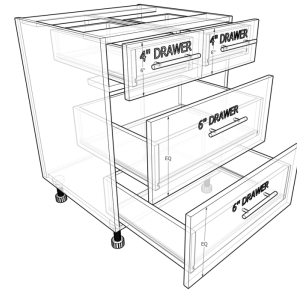
CODE: **V2D** - W - H - D

Vanity 3 Drawer



CODE: **V3D** - W - H - D

Vanity 4 Split Drawer



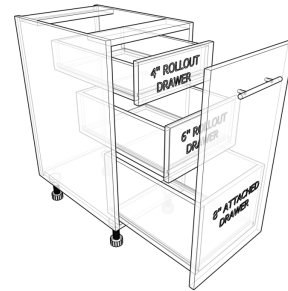
CODE: **V4SD** - W - H - D

Vanity 3 Rollout Full Height



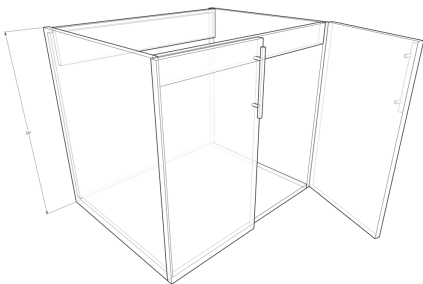
CODE: **V3RFH** - W - H - D

Vanity Attach 2 Rollout Drawer



CODE: **VA2RD** - W - H - D

Vanity Floating Sink Full Height



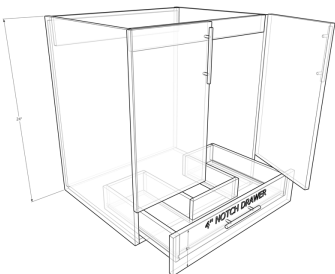
CODE: **VFSFH** - W - H - D

Vanity Floating Sink



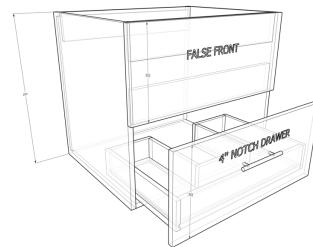
CODE: **VFS** - W - H - D

Vanity Floating Sink 1 Drawer Bottom



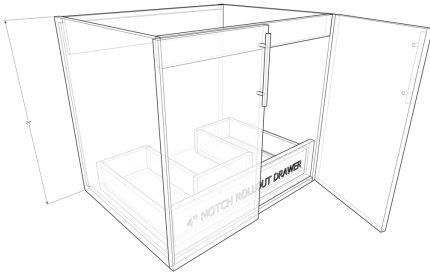
CODE: **VFS1DB** - W - H - D

Vanity Floating Sink 1 Drawer



CODE: **VFS1D** - W - H - D

Vanity Floating Sink 1 Rollout Full Height



CODE: VFS1RFH - W - H - D

Vanity Floating Full Height



CODE: VFFH - W - H - D

Vanity Floating 1 Drawer Top



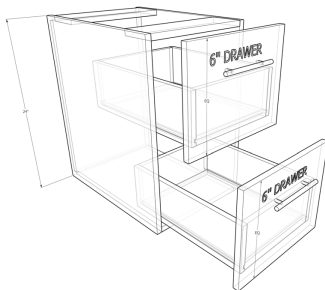
CODE: VF1DT - W - H - D

Vanity Floating 1 Drawer Bottom



CODE: VF1DB - W - H - D

Vanity Floating 2 Drawer



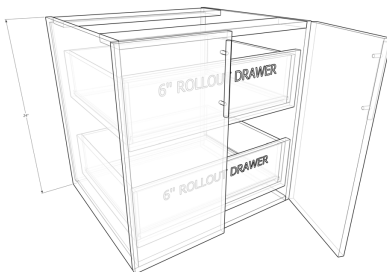
CODE: VF2D - W - H - D

Vanity Floating 3 Drawer



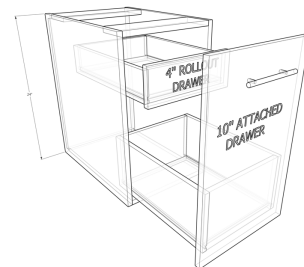
CODE: VF3D - W - H - D

Vanity Floating 2 Rollout Full Height



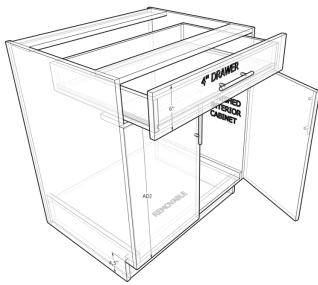
CODE: VF2RFH - W - H - D

Vanity Floating Attach 1 Rollout Drawer



CODE: VFA1RD - W - H - D

Vanity ADA Removable 1 Drawer Top



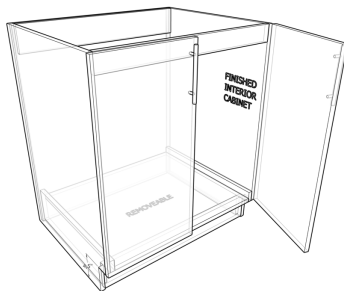
CODE: **VAR1DT** - W - H - D

Vanity ADA Removable Sink



CODE: **VAR S** - W - H - D

Vanity ADA Removable Sink Full Height



CODE: **VRSFH** - W - H - D

Medicine Cabinet



CODE: **MED** - W - H - D

Mirror Medicine Cabinet



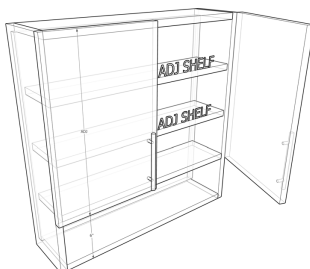
CODE: **MMC** - W - H - D

Mirror Medicine ADJ Shelf Left/Right



CODE: **MMASL/MMASR** - W - H - D

Over John



CODE: **OJ** - W - H - D

FINISH WARDROBE

Specifications

Can not change wardrobe heights or depth from the catalogue measurements

Wardrobes assembled with dowel and glue

Wardrobes come with both side ends finished

Wardrobes come with 3" flush toe kick

Wardrobes come with 3" alluminum hanging rods

Wardrobe accessories sold seperately

All cabinets 0" - 23 7/8" have one door.

All cabinets 24" - 48" have 2 doors.

Wardrobe Double Rod



CODE: **WDR** - - -

Wardrobe Single Rod



CODE: **WSR** - - -

Wardrobe ADJ Shelf Single Rod



CODE: **WASSR** - - -

Wardrobe Single Rod ADJ Shelf



CODE: **WSRAS** - - -

Wardrobe Single Rod Accessory



CODE: **WSRA** - W - H - D

Wardrobe ADJ Shelf Accessory



CODE: **WASA** - W - H - D

Wardrobe ADJ Shoe Shelf Accessory



CODE: **WASSA** - W - H - D

Wardrobe ADJ Shoe Shelf



CODE: **WASS** - W - H - D

Wardrobe ADJ Shelf



CODE: **WAS** - W - H - D

Wardrobe ADJ Shelf 4 Drawer



CODE: **WAS4D** - W - H - D

Wardrobe ADJ Shoe Shelf 4 Drawer



CODE: **WASS4D** - W - H - D

Wardrobe Open 4 Drawer



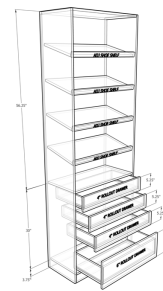
CODE: **WO4D** - W - H - D

Wardrobe ADJ Shelf 4 Rollout Drawer



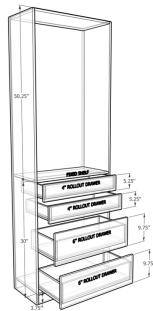
CODE: **WAS4RD** - - -

Wardrobe ADJ Shoe Shelf 4 Rollout Drawer



CODE: **WASS4RD** - - -

Wardrobe Open 4 Rollout Drawer



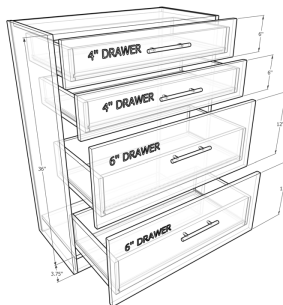
CODE: **WO4RD** - - -

Wardrobe Hutch Single Rod



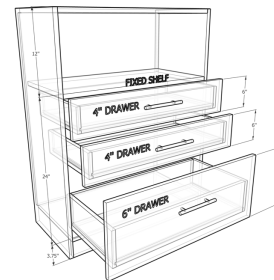
CODE: **WHSR** - - -

Island 4 Drawer



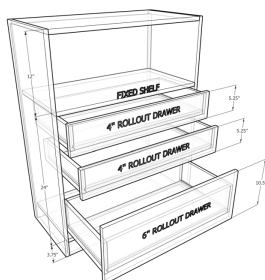
CODE: **I4D** - - -

Island 3 Drawer



CODE: **I3D** - - -

Island 3 Rollout Drawer



CODE: **I3RD** - - -

Island ADJ Shelf



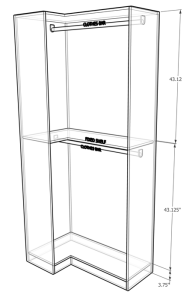
CODE: **IAS** - - -

Island ADJ Shoe Shelf



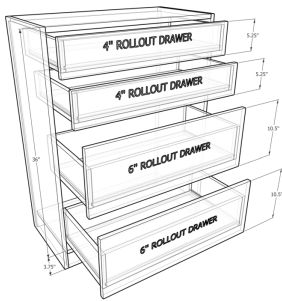
CODE: **IASS** - W - H - D

Wardrobe Corner Corner Double Rod Right/Left



CODE: **WCCDRR/WCCDRL** - W - H - D

Island 4 Rollout Drawer



CODE: **I4RD** - W - H - D

FINISH PANEL

Specifications

Plant On Gables Comes With Both Sides Finished

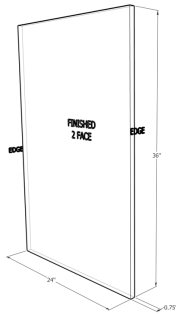
Edges That Are Finished Are Specified On Catalog

Mirror Frame Come With 3mm Mirror

All cabinets 0" - 23 7/8" have one door.

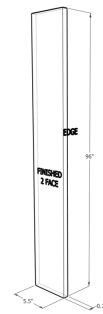
All cabinets 24" - 48" have 2 doors.

Base Plant Gable



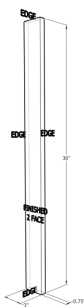
CODE: **BPOG** - W - H - D

Slab Furniture Kick



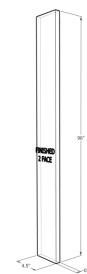
CODE: **SFK** - W - H - D

Filler



CODE: **FIL** - W - H - D

Kickbox Riser



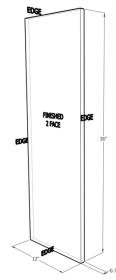
CODE: **KBR** - W - H - D

Arch



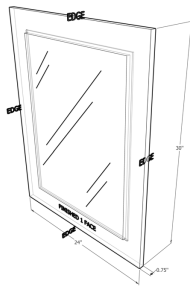
CODE: **ARCH** - W - H - D

Plant On Gable



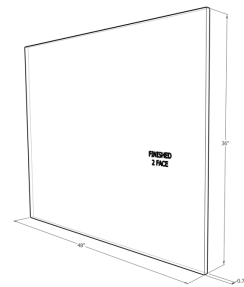
CODE: **POG** - W - H - D

Mirror Frame



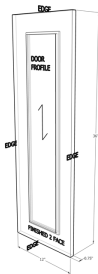
CODE: **MF** - W - H - D

Base Island Plant On Gable



CODE: **BIBPOG** - W - H - D

Decorative Panel



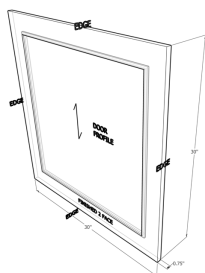
CODE: **DP** - W - H - D

Door Flush Riser



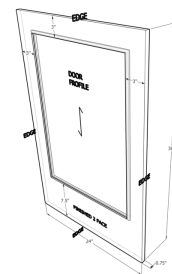
CODE: **DFR** - W - H - D

Appliance Panel



CODE: **AP** - W - H - D

Base Decorative Panel



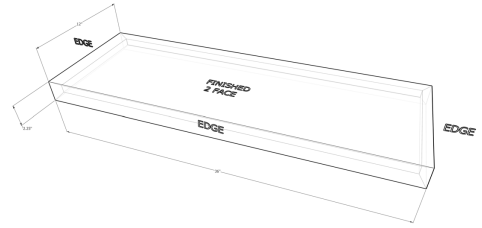
CODE: **BDP** - W - H - D

Wall End Panel



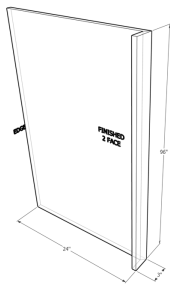
CODE: **WEP** - - -

Free Floating Shelf



CODE: **FFS** - - -

Base End Panel



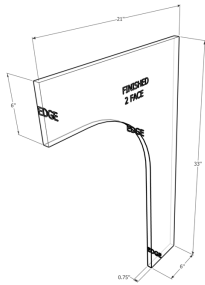
CODE: **BEP** - - -

Base J Plant On Gable



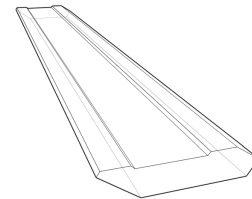
CODE: **BJPOG** - - -

ADA Plant On Gable



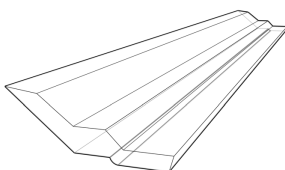
CODE: **APOG** - - -

Town Send Cornice



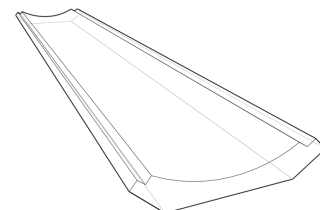
CODE: **E-6** - - -

Shaker Crown



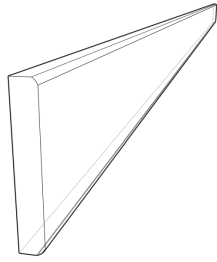
CODE: **C-CC2** - - -

Trajan Cornice



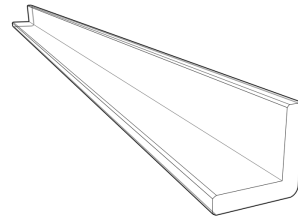
CODE: **E-4** - - -

Seam Moulding



CODE: **C-G3** - ^W - ^H - ^D

45 Degree Corner Moulding



CODE: **C-F15** - ^W - ^H - ^D

INDEX

Base Cabinets

Base Cabinet Specifications.....	1
Base Sink Full Height.....	1
Base Sink Slide In Full Height.....	1
Base Sink.....	1
Base ADA Removable Sink.....	1
Base Sink 1 Drawer Bottom.....	2
Base Sink 1 Drawer.....	2
Base Sink 1 RollOut Full Height.....	2
Base Sink 1 RollOut.....	2
Base ADA Removable 1 Drawer Top.....	2
Base ADA Removable Sink Full Height.....	2
Base Cooktop Full Height.....	2
Base Cooktop.....	2
Base Cooktop Slide In Full Height.....	3
Base Cooktop 1 Drawer Bottom.....	3
Base Cooktop 1 Drawer.....	3
Base Cooktop 2 Drawer.....	3
Base Cooktop Slide In 2 Drawer.....	3

Base Sink Full Height.....	2
Base Drawer Box.....	3
Base Full Height.....	3
Base 1 Drawer Top.....	3
Base 1 Drawer Bottom.....	4
Base 1 Cutting Board Top.....	4
Base 1 Cutlery Double Drawer Top.....	4
Base Pot Pan 2 Drawer.....	4
Base Plug 2 Drawer.....	4
Base 3 Drawer.....	4
Base 4 Split Drawer.....	4
Base 2 Split Drawer.....	4
Base 4 Drawer.....	5
Base 5 Split Drawer.....	5
Base 1 Rollout Full Height.....	5
Base 2 Rollout Full Height.....	5
Base 1 Drawer Top 2 Rollout.....	5
Base 3 Rollout Full Height.....	5
Base Attach 2 Rollout Drawer.....	5

Base Pantry Full Height.....	5
Base Blind Corner Left/Right.....	6
Base Pantry 4 Drawer.....	6
Base Pantry 3 Rollout Full Height.....	6
Base Corner Corner.....	6
Base Angle Corner.....	6
Base Tall Frameless Fridge.....	6
Base Tall Corner Corner.....	6
Base Tall.....	6
Base Face Frame Single Appliance.....	7
Base Face Frame Double Appliance.....	7
Base Tall Full Height.....	7
Base Tall Accessory Full Height.....	7
Base Pantry Tall.....	7
Base 3 Drawer Tall.....	7
Base Pantry 4 Drawer Tall.....	7
Base Tall 3 Drawer Frameless Single Appliance.....	7
Base Tall 1 Drawer Frameless Double Appliance.....	8

Wall Cabinets

Wall Cabinet Specifications.....	9
Wall.....	9
Wall Hidden Valance.....	9
Wall Blind Corner Left/Right.....	9
Wall Hidden Valance Blind Corner Left/Right.....	9
Wall Drawer Box.....	10
Wall Hood Fan.....	10

Wall Hidden Valance A Hood Fan.....	10
Wall Hood Fan Flip Up.....	10
Wall Flip Up.....	10
Wall Hidden Valance Flip Up.....	10
Wall Bi Fold.....	10
Wall Hidden Valance Bi Fold.....	10
Wall Angle End Full Height.....	11
Wall Angle Corner.....	11

Wall Hidden Valance Angle Corner.....	11
Wall Corner Corner.....	11
Wall Hidden Valance Corner Corner.....	11
Wall Face Frame Single Appliance.....	11
Wall Face Frame Double Appliance.....	11
Wall Frameless Single Appliance.....	11
Wall Frameless Double Appliance.....	12

Finished Interior Cabinets

Finished Cabinet Specifications.....	13
Wall Open.....	13
Base Open.....	13
Island Microwave Open.....	13
Base End Open Left/Right.....	13

Hutch Full Height.....	14
Wall Angle End Open.....	14
Wall Microwave.....	14
Hutch Accessory.....	14
Hutch ADJ Shelf.....	14

Wine Lattice Rack.....	14
Vertical Pigeon Hole.....	14
Horizontal Pigeon Hole.....	14
Wine X Cubie.....	15

Bathroom Cabinets

Vanity Cabinet Specifications.....	16
Vanity Sink Full Height.....	16
Vanity Sink.....	16
Vanity Sink 1 Drawer Bottom.....	16
Vanity Sink 1 Drawer.....	16
Vanity Sink 1 Roll Out Full Height.....	17
Vanity Sink 1 Roll Out.....	17
Vanity Combo 2 Drawer Left/Right.....	17
Vanity Combo 4 Drawer.....	17
Vanity Full Height.....	17
Vanity 1 Drawer Top.....	17

Vanity 1 Drawer Bottom.....	17
Vanity 2 Drawer.....	17
Vanity 3 Drawer.....	18
Vanity 4 Split Drawer.....	18
Vanity 3 Rollout Full Height.....	18
Vanity Attach 2 Rollout Drawer.....	18
Vanity Floating Sink Full Height.....	18
Vanity Floating Sink.....	18
Vanity Floating Sink 1 Drawer Bottom.....	18
Vanity Floating Sink 1 Drawer.....	18
Vanity Floating Sink 1 Rollout Full Height.....	19
Vanity Floating Full Height.....	19
Vanity Floating 1 Drawer Top.....	19

Vanity Floating 1 Drawer Bottom.....	19
Vanity Floating 2 Drawer.....	19
Vanity Floating 3 Drawer.....	19
Vanity Floating 2 Rollout Full Height.....	19
Vanity Floating Attach 1 Rollout Drawer.....	19
Vanity ADA Removable 1 Drawer Top.....	20
Vanity ADA Removable Sink.....	20
Vanity ADA Removable Sink Full Height.....	20
Medicine Cabinet.....	20
Mirror Medicine Cabinet.....	20
Mirror Medicine ADJ Shelf Left/Right.....	20
Over John.....	20

INDEX

Wardrobes

Wardrobe Cabinet Specifications.....21	Wardrobe ADJ Shoe Shelf.....22	Wardrobe Hutch Single Rod..... 23
Wardrobe Double Rod.....21	Wardrobe ADJ Shelf.....22	Island 4 Drawer..... 23
Wardrobe Single Rod.....21	Wardrobe ADJ Shelf 4 Drawer.....22	Island 3 Drawer..... 23
Wardrobe ADJ Shelf Single Rod.....21	Wardrobe ADJ Shoe Shelf 4 Drawer.....22	Island 3 Rollout Drawer.....23
Wardrobe Single Rod ADJ Shelf.....21	Wardrobe Open 4 Drawer.....22	Island ADJ Shelf.....23
Wardrobe Single Rod Accessory.....22	Wardrobe ADJ Shelf 4 Rollout Drawer.....23	Island ADJ Shoe Shelf.....24
Wardrobe ADJ Shelf Accessory.....22	Wardrobe ADJ Shoe Shelf 4 Rollout Drawer...23	Wardrobe Corner Corner Double Rod Right/Left...24
Wardrobe ADJ Shoe Shelf Accessory.....22	Wardrobe Open 4 Rollout Drawer.....23	Island 4 Rollout Drawer..... 24

Plant on Gable

Plant on Gable Specifications.....25	Base Island Plant On Gable.....26	Base J Plant On Gable..... 27
Base Plant Gable.....25	Decorative Panel.....26	ADA Plant On Gable..... 27
Slab Furniture Kick.....25	Door Flush Riser.....26	Town Send Cornice.....27
Filler.....25	Appliance Panel.....26	Shaker Crown..... 27
Kickbox Riser.....25	Base Decorative Panel.....26	Trajan Cornice..... 27
Arch.....26	Wall End Panel..... 27	Seam Moulding.....28
Plant On Gable.....26	Free Floating Shelf..... 27	45 Degree Corner Moulding.....28
Mirror Frame.....26	Base End Panel..... 27	